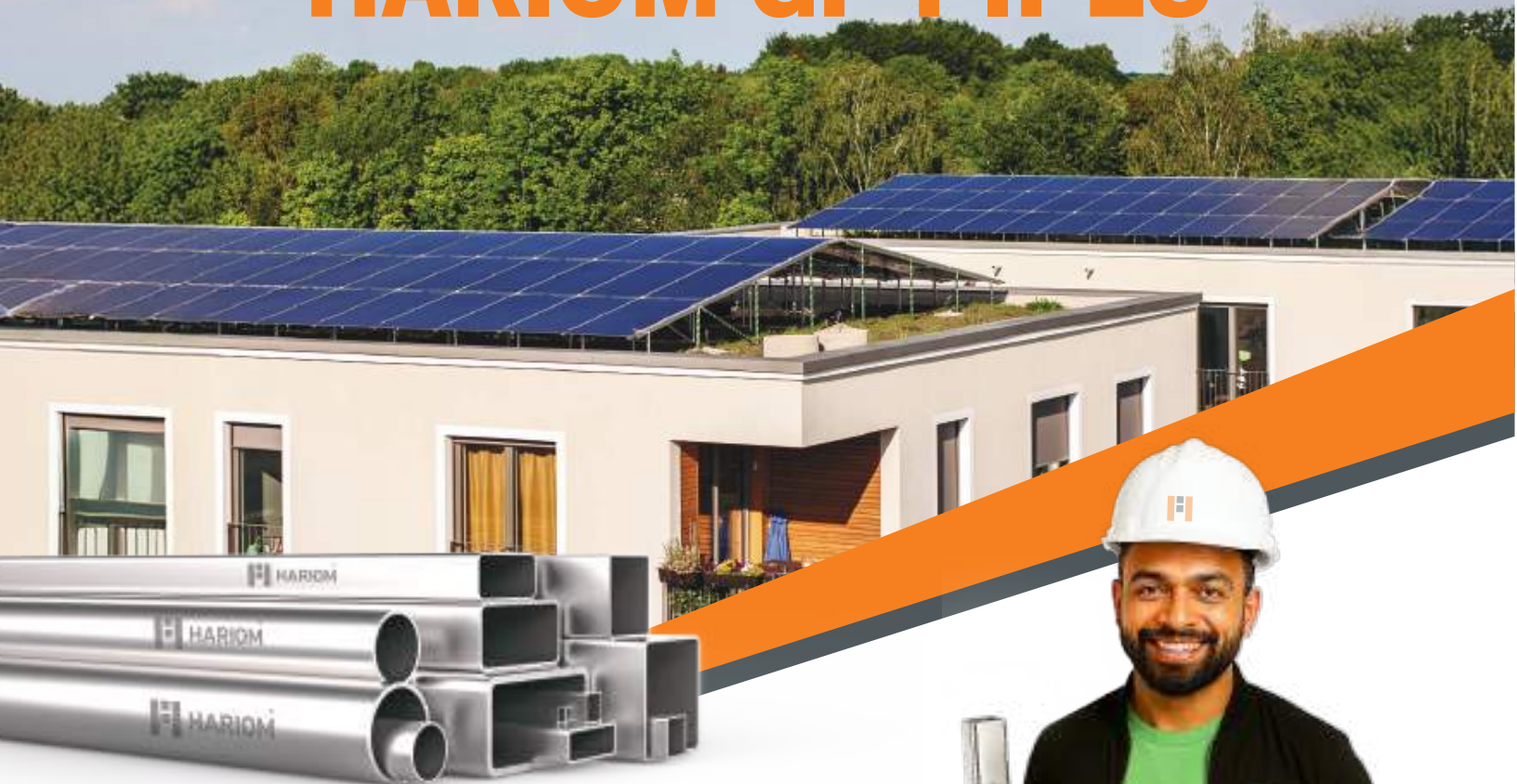


STRENGTHEN YOUR SOLAR INSTALLATION TO BRAVE WIND, WEATHER & TIME WITH **HARIOM GP PIPES**



Power your solar vision with the strength it deserves. With corrosion-resistant galvanization, superior load capacity, and sustainable engineering, **Hariom GP Pipes** deliver long-lasting performance for modern solar mounting systems.



SUPERIOR STRENGTH

Withstands
high wind
speeds



CORROSION RESISTANT

30+ years
structural
life



GREATER LOAD CAPACITY

Even load
distribution



OUTPERFORMS C-CHANNELS

Enhanced
durability



**ENGINEERED FOR STRENGTH,
BUILT FOR THE FUTURE**

TECHNICAL SUPERIORITY

- Round profile for even stress distribution
- Hot-dip galvanised coating
- High tensile strength steel
- Weather-resistant finish
- Precision-engineered dimensions

GOVERNMENT SCHEME

- PM Surya Ghar Muft Bijli Yojana ready
- PM-KUSUM scheme approved
- Meets all BIS standards
- Residential & commercial applications
- Agricultural solar pump mounting



RHS PIPES VS C CHANNELS

COMPARISON TABLE

Sr. No.	Parts	Description C RHS Pipe	Unit Weight	Description C CHANNEL	Unit Weight	Difference
1.	Column Post	100x50x2.0, Length: 2779 mm	12.74	(150X50X15X2), Length: 2779 mm	12.2	0.54
2.	Base Plate	(400X150X5)	2.36	(400X150X5)	2.36	0
3.	Rear Tilt	30x30x1.6 Length: 1476 mm	2.11	(80X40X15X1.2), Length: 1476 mm	2.64	-0.53
4.	Front Tilt	30x30x1.6 Length: 1563 mm	2.23	(80X40X15X1.2), Length: 1563 mm	2.79	-0.56
5.	Rafter	60x40x2.0, Length: 4197 mm	12.65	(100X40X15X1.6), Length: 4197 mm.	11.07	+1.58
6.	Purlin	40x20x1.2 Length: 29958 mm	32.51	(90X40X10X0.9), Length: 29958 mm	40.2	-7.69
7.	Diagonal Member	25x15x1.2, Length: 50 mm	0.04	(80X40X15X1.2), Length: 50 mm	0.09	-0.05
			64.64		71.35	-6.70

Total Structure Weight: -

C-Channel Structure: ~71.35 kg

GI RHS Pipe Structure: ~64.64 kg

Structure	Dead Load (N/m ²)	Wind Load Avg	Wind Load Max	Total Load Avg	Total Load Max
C-Channel	145.29	2.97	994.57	148.26 = 15.11 Kg	1139.86 = 116.19 Kg
RHS Pipe	143.82	2.97	994.57	146.79= 14.96 Kg	1138.39 = 116.04 Kg

Feature	C- Chanell	RHS PIPE
Total Load Capacity	232240.35 kg	278010.3768 kg
Area	134.16 m ²	134.16 m ²
Capacity (N/m ²)	1731.07 kg/m ²	2072.23 Kg/m ²
Torsion Resistance	Low	High

IMPORTANT NOTE: THE SPECIFICATIONS AND DATA PROVIDED ARE SUBJECT TO VARIATION DEPENDING ON THE PHYSICAL AND CHEMICAL COMPOSITION OF THE MATERIAL.

SAHI AUR MAJBOOT CHUNO

CONTACT:

1800 1230 360
info@hariompipes.com

FOLLOW US:

[f](#) [@](#) [v](#) [in](#) [x](#) /hariompipes
[www.hariompipes.com](#)